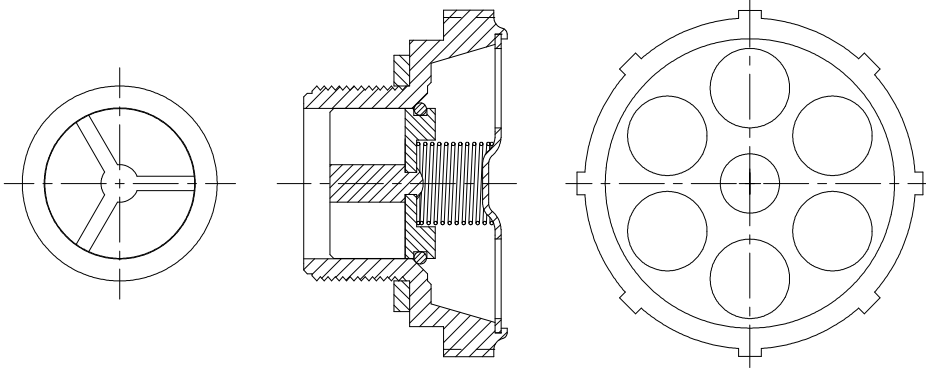


INBREATHING VENT – 1<sup>5</sup>/<sub>8</sub>-12 THD.



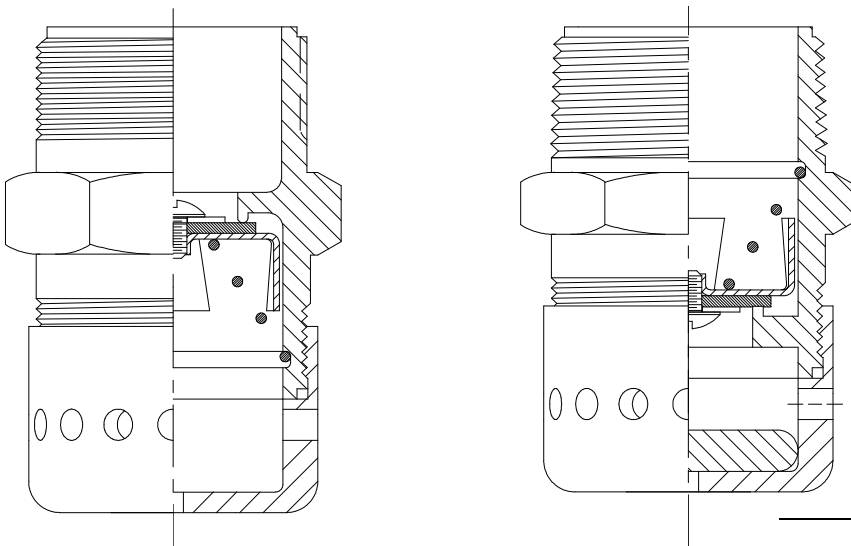
Designed to supplement the 6238AL vent to provide additional inbreathing capacity when required. This vent may be used singly or in multiples according to requirements.

NOTE: While this vent does provide additional inbreathing capacity, it is recommended that positive vents, which will open with the emergency valve, be provided when discharging product with the manhole closed.

	Thru Area	Capacity at 1 PSIG
Inbreathing	1.00 sq. in.	4000 cu. ft. hr.

Material			Thread Size	A	Wt.	Assembly No.
Body & O-Ring Holder	O-Ring	Spring				
Aluminum	Viton	Stnls. 316	1 <sup>5</sup> / <sub>8</sub> -12	1 <sup>11</sup> / <sub>16</sub>	4.5 oz.	6234AL

COMBINATION VENT PACKAGE



VENT PACKAGE

Combination Vent Packages, consisting of Tiona's all new single-purpose vents, are available for all combination manholes with fill. Each vent provides 0.44 sq. in. of venting area. They are easily cleaned, have high capacity, and are available in a variety of materials. These vents have been flow tested and marked in accordance with Nat. Fire Protection Assn. No. 385 (1964) Par. 2263 and No. 407 (1964) Par. 616.

	Thru Area	Capacity
Inbreathing	0.44 sq. in.	1750 cu. ft. hr. @ 1 PSIG
Outbreathing	0.44 sq. in.	3285 cu. ft. hr. @ 3 PSIG

Material	Combination Vent Package Includes	Wt.	Symbol
Aluminum	1-No. 3006 Intake Vent with 1 <sup>5</sup> / <sub>8</sub> -12 Thread 1-No. 3008 Exhaust Vent with 1 <sup>1</sup> / <sub>4</sub> I.P.S. Thread	7.5 oz.	CVA
Stnls. 316	1-No. 3052 Threaded Opening and Weatherhood	19.3 oz.	CVD