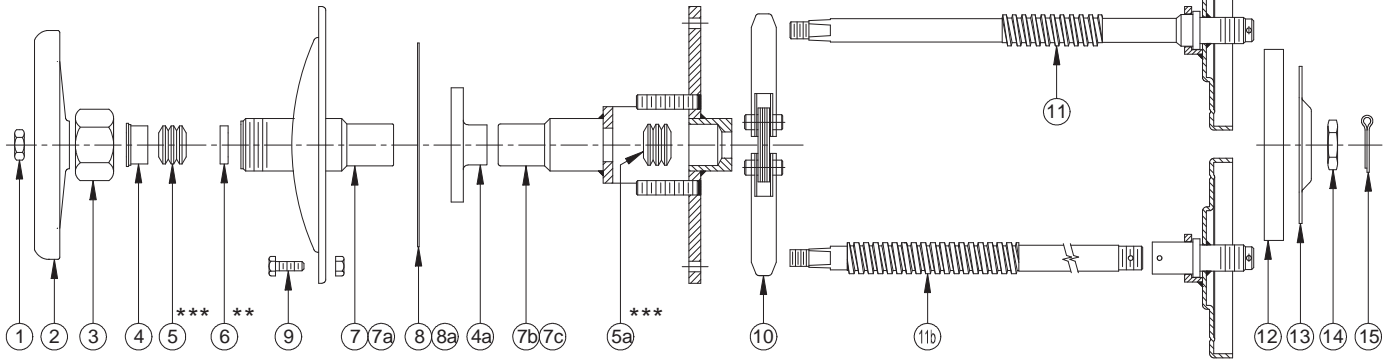


PARTS LIST

# Hydrolet Valves



No.	Description	Req'd.	Size	Material	Part No.
1	Hex Nut 7/16-14 Thd.	1	3"-4"	Steel Zinc Plt.	9Q8579
2	Handwheel	1	3"	Aluminum	25186AL
			4"	Aluminum	25245AL
3	Stuffing Box Nut	1	3"-4"	Aluminum	15026AL
4	Top Gland	1	3"-4"	316 Stnls	15220SS
			3"-4"	304 Stnls	16758SL
4a	Top Gland OS&Y Style	1	3"-4"	304 Stnls	16758SL
5***	Teflon Packing	1	3"-4"	Teflon	19649TF
5a***	Teflon Packing	1	3"-4"	Teflon	19648TF
6**	Bottom Gland	1	3"-4"	316 Stnls	15076SS
7	Tophead & Bonnet Bolted Style	1	3"	Steel	15382MS
				Aluminum	15382AL
			4"	Steel	25365MS
				Aluminum	25365AL
7a	Tophead & Bonnet QRB Style	1	3"	316 Stnls	15573SS
				Aluminum	15573AL
			4"	316 Stnls	16126SS
				Aluminum	16126AL
7b	Tophead & Bonnet QRB OS&Y	1	3"	316 Stnls	26133SS
				Aluminum	26133AL
			4"	316 Stnls	26138SS
				Aluminum	26138AL
7c	Tophead & Bonnet Bolted OS&Y	1	3"	Steel	26145MS
				Aluminum	26145AL
			4"	Steel	26150MS
				Aluminum	26150AL
8	Tophead Gasket Bolted Style	1	3"	Cork-Buna-N	15022CB
				Non-Asbestos	15022NA
				Teflon-Env.	15022TF
			4"	Cork-Buna-N	15265CB
				Non-Asbestos	15265NA
				Teflon-Env.	15265TF

No.	Description	Req'd.	Size	Material	Part No.			
8a	Tophead Gasket QRB Style	1	3"	Cork-Buna-N	15905CB			
				Teflon-Env.	15905TF			
			4"	Cork-Buna-N	15977CB			
				Teflon-Env.	15977TF			
9	Bolts & Nuts (Sets)	Set	3"	Steel Zinc Plt.	15023ZC			
			3"	18-8 Stnls	15023SL			
			4"	Steel Zinc Plt.	16549ZC			
10	QRB Clamp	1	3"	304 Stnls	25641SL			
			4"	304 Stnls	25683SL			
11	Disc Holder & Stem Assy. Bolted & QRB Style	1	3"	All Aluminum	17683AL			
				All Steel	17683MS			
				All Stnls	17683SS			
			4"	All Aluminum	17684AL			
				All Steel	17684MS			
				All Stnls	17684SS			
11a	Disc Holder & Stem Assy. OS&Y Style	1	3"	Steel	28003MS			
				316 Stnls	28003SS			
			4"	Steel	28004MS			
				316 Stnls	28004SS			
			12	Disc	1	3"	Buna-N	15202BU
							Non-Asbestos	15202NA
Teflon	15202TF							
4"	Viton	15202VT						
	Buna-N	15024BU						
	Non-Asbestos	15024NA						
13	Disc Retaining Plate	1	3"	316 Stnls	17028SS			
			Steel	15051MS				
			4"	Aluminum	15051AL			
				316 Stnls	15051SS			
				316 Stnls	15204SS			
			14	Disc Plate Nut	1	3"-4"	316 Stnls	15204SS
15	Cotter Pin 1/8x1	1*	3"-4"	316 Stnls	9Q5867			

\*\* This part note req'd. on OS&Y Models

\* 2 Req'd. on OS&Y Models

\*\*\* Note:

No. 5 used with Std. Bonnet Models only.  
No. 5a used with OS&Y Models only.

### HYDROLET SUB-ASSEMBLIES

Size	Hydrolet Material	Bolted Style	Bolted OS&Y Style	QRB Style	QRB-OS&Y Style
3"	Steel	WV17593MSB	WV17607MSB		
	Aluminum	WV17593ALB	WV17607ALB	WV17609ALB	WV17611ALB
	316 Stnls.			WV17609SST	WV17611SST
4"	Steel	WV17594MSB	WV17608MSB		
	Aluminum	WV17594ALB	WV17608ALB	WV17610ALB	WV17612ALB
	316 Stnls.			WV17610SST	WV17612SST

NOTES: Cotter pins only provided on sub-assemblies ordered with either Teflon or Non-Asbestos disc.

Bolted sub-assemblies do not include QRB clamp (Item #10)

QRB sub-assemblies do not include Bolts & Nuts (Item #9)

Steel and Aluminum sub-assemblies are standard with Buna-N disc, Cork-Buna-N Gasket and Non-Asbestos packing (Suffix "B").

Stainless sub-assemblies are standard with Teflon disc, packing and gasket (Suffix "T").

VARIATIONS: (Suffix "A"-Bolted Style) when used would include non-asbestos disc, packing and gasket.

(Suffix "A"-QRB Style) when used would include non-asbestos disc, packing and teflon gasket.

(Suffix "V"-Bolted or QRB Style) when used would include viton disc, teflon packing and gasket.

**WARNING** Use only genuine Betts Industries Inc. replacement parts. Use of substitute parts can impair the proper functioning of this product.