

## Series N800

- Fuel Dispensing (Consult Factory)
- Waste Oil Evacuation • Air/Water

Tank Truck Service & Sales Warren, Michigan  
800-482-2678 www.tanktruckservice.com

### To handle 3/4" or 1" I.D. hose.

- Narrow frame and compact mounting base.
- Non-sparking ratchet assembly.
- Declutching arbor to prevent damage from reverse winding.
- Standard inlet: 90° balanced pressure swivel joint, 1" female NPT threads.
- Standard outlet: 1" female NPT threads.
- Standard pressures to 2000 psi (138 bar), available up to 6000 psi (414 bar) – must specify.
- Temperatures from -40°F to +250°F (-40°C to +121°C), optional temperatures to +400°F (+204°C) – must specify.
- 4-way roller assembly.
- SR and VR roller positions: swivel joint is standard on the right. TR roller positions: swivel joint is standard on the left. Other configurations available, must specify.
- Constant tension is available – consult factory.



Optional TR roller position shown

### PARTS DRAWING – ISO 81

| Model Number                | Hose Capacity of Reel<br>feet m |                   |                  | Approx. Weight<br>lb. kg |                              |                        | Standard Roller Assy. | Reel Dimensions***<br>in. mm |                 |                    |                     |                  |                  |                     |                  |
|-----------------------------|---------------------------------|-------------------|------------------|--------------------------|------------------------------|------------------------|-----------------------|------------------------------|-----------------|--------------------|---------------------|------------------|------------------|---------------------|------------------|
|                             | I.D. in.<br>mm                  | 3/4<br>19         | 1<br>25          | NET                      | UPS/<br>FedEx<br>SHIP<br>Wt. | Freight<br>SHIP<br>Wt. |                       | A                            | B               | C                  | E                   | F                | G                | H                   | X                |
|                             | O.D. in.<br>mm                  | 1-9/32<br>33      | 1-9/16<br>40     |                          |                              |                        |                       |                              |                 |                    |                     |                  |                  |                     |                  |
| <b>N816-19-20-10.5J</b> **  |                                 | <b>25</b><br>8    | <b>15</b><br>5   | <b>75</b><br>34          | <b>83*</b><br>38             | <b>110</b><br>50       | <b>N204</b>           | <b>10</b><br>254             | <b>4</b><br>102 | <b>10.5</b><br>267 | <b>20.75</b><br>527 | <b>13</b><br>330 | <b>20</b><br>508 | <b>10.62</b><br>270 | <b>8</b><br>203  |
| <b>†N818-23-24-10.5J</b> ** |                                 | <b>50†</b><br>15† | <b>25†</b><br>8† | <b>87</b><br>39          | –<br>–                       | <b>122</b><br>55       | <b>N206</b>           | <b>12</b><br>305             | <b>6</b><br>152 | <b>10.5</b><br>267 | <b>23.75</b><br>603 | <b>15</b><br>381 | <b>24</b><br>610 | <b>12.62</b><br>321 | <b>10</b><br>254 |
| <b>N816-25-26-10.5B</b>     |                                 | <b>60</b><br>18   | <b>35</b><br>11  | <b>96</b><br>44          | –<br>–                       | <b>131</b><br>59       | <b>N204</b>           | <b>10</b><br>254             | <b>4</b><br>102 | <b>10.5</b><br>267 | <b>25.25</b><br>641 | <b>13</b><br>330 | <b>26</b><br>660 | <b>13.62</b><br>346 | <b>8</b><br>203  |
| <b>N818-25-26-10.5B</b> **  |                                 | <b>70</b><br>21   | <b>50</b><br>15  | <b>102</b><br>46         | –<br>–                       | <b>137</b><br>62       | <b>N206</b>           | <b>12</b><br>305             | <b>6</b><br>152 | <b>10.5</b><br>267 | <b>25.25</b><br>641 | <b>15</b><br>381 | <b>26</b><br>660 | <b>13.62</b><br>346 | <b>10</b><br>254 |

\*\* Reels offered in standard Reel Packages with hose. Hose not included in weights above.

#### Notes:

**A hose stop is necessary to keep spring from unwinding.**

1. Specifications subject to change.
2. Reel models and capacities shown are for standard drag applications; for vertical lift applications, consult factory.
3. Other sizes, from standard components, available on request.
4. Finish: Refer to page 3.

5. Be sure to check dimensions and weights prior to ordering.

**NOTICE:** A flexible connector must be used between the inlet pipe and the inlet swivel joint.  
\*Dimensional weight may apply when shipped as a parcel package (via FedEx or UPS Ground).

\*\*\* X, Y indicate mounting holes. See page 5.

†Capacity based on low pressure air hose only.

#### Available Roller Positions



SR (STD)



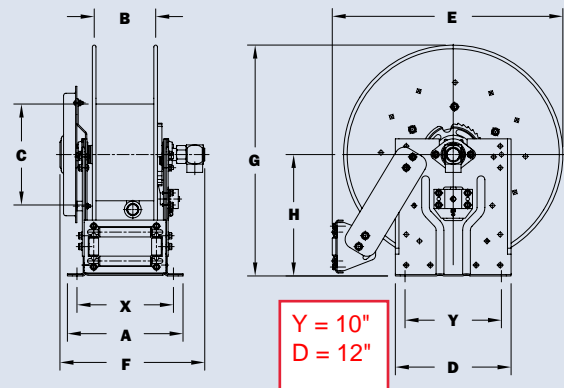
VR (OPT)

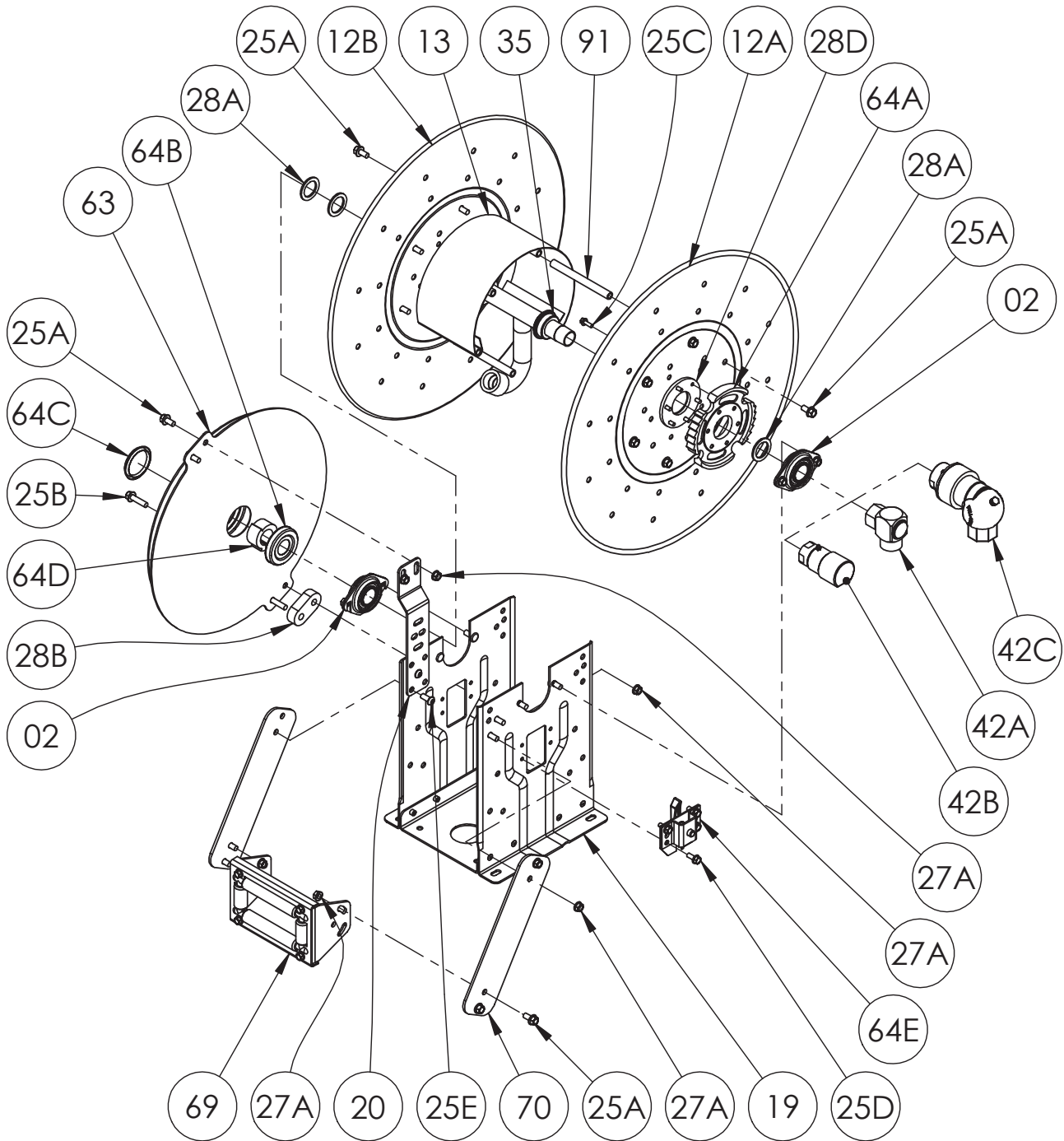


TR (OPT)



TR (Wallmount)





**When Ordering Parts**  
**BE SURE TO SPECIFY COMPLETE MODEL NUMBER and SERIAL NUMBER OF REEL**  
**USE PART NUMBER!**

| <u>Item No.</u> | <u>Description</u>   | <u>Part No.</u>     | <u>Qty</u> |
|-----------------|--|---------------------|------------|
| 02              | 1" Self Aligning Bearing for N Series Complete (See ISO-210 for Parts).....  | 9902.2600           | 2          |
| 12A             | Front Disc.....  | Spec Model/Serial # | 1          |
| 12B             | Back Disc (Includes Disc Washer for 23-24 and larger Discs).....   | Spec Model          | 1          |
| 13              | 10-1/2" Diameter 304 SST Wrap Around Drum (Specify Model).....   | 9905.0138           | 1          |
| 19              | N Series Spring Reel Frame Assembly Complete.....  | Spec Model          | 1          |
| 20              | Universal Spring Mounting Bracket for N Series, per P20A-00280 (for "B" & "J" Springs) .....                           | 9922.0050           | 1          |
| 25A             | 3/8"-16 x 3/4" Spinlock Bolt.....  | 9904.2201           | 16 or 18   |
| 25B             | 3/8"-16 x 1-1/2" Spinlock Bolt (For "B" Spring).....   | 9904.2204           | 2          |
| 25C             | 1/4"-20 x 3/4" Spinlock Bolt (For Ratchet Wheel).....  | 9904.1060           | 6          |
| 25D             | 5/16"-18 x 3/4" Thread Cutting Hex Head Bolt (For Ratchet Locking Ass'y).....  | 9958.0055           | 4          |
| 25E             | 3/8"-16 x 7/8" Socket Head Cap Screw.....  | 9904.9201           | 4          |
| 25F             | 5/16"-18 x 1-1/2" Hex Socket Button Head Screw (For "J" Spring) (Not Shown).....                                       | 9904.9104           | 1          |
| 25G             | 5/16"-18 x 3/4" Hex Socket Button Head Screw (For "J" Spring) (Not Shown).....   | 9904.9101           | 1          |
| 27A             | 3/8"-16 Spinlock Nut.....  | 9904.6200           | 8 or 12    |
| 27B             | 5/16"-18 Large Flange Spinlock Nut (For "J" Spring) (Not Shown).....   | 9904.6100           | 2          |
| 28A             | 1-7/8" O.D. x 1-5/16" I.D. x 1/8" Thick Hub Spacer, per P28A-00360 (Plastic).....                                      | 9954.0021           | 3          |
| 28B             | Oval Spring Spacer, per P28A-00020 (For "B" Spring).....   | 9922.0032           | 1          |
| 28C             | Spring Spacer, per P28A-00070 (For "J" Spring) (Not Shown).....  | 9922.0033           | 1          |
| 28D             | Disc Washer (For Under Ratchet Wheel).....   | 9965.0015           | 1          |
| 29              | Woodruff Key #9 for Spring Arbor (3/16" x 3/4") (Not Shown).....   | 9916.0080           | 1          |
| 30A             | Caution Decal (Spring Under Tension) (Not Shown).....  | 9922.0010           | 1          |
| 30B             | Caution Decal (Rewind Caution) (Not Shown).....  | 9922.0014           | 1          |
| 35              | 1" Barstock Hub Assembly (Specify Model/Serial Number and Riser Fitting).....  | 9901.1610           | 1          |
| 35              | 1" Barstock Hub Assembly (Up to 5,000psi) (Specify Model/Serial Number and Riser Fitting)                              | 9901.1611           | 1          |
| 42A             | 1" 90 Degree FxF Steel 3000 PSI Balanced Pressure Swivel Joint (BUNA).....   | 9929.8538           | 1          |
| 42B             | 1" 90 Degree FxF Steel 4000 PSI Full Flow Swivel Joint (GLT VITON).....  | 9929.8552           | 1          |
| 42C             | 1" 90 Degree FxF Steel 350 PSI Full Circle Swivel Joint (LPG) (PBN800 Reels).....                                      | 9929.0501           | 1          |
| 63              | "B" Spring w/ Arbor (Item 64D).....  | 9921.0015           | 1          |
| 63              | "J" Spring w/ Arbor (Item 64D) (Not Shown).....  | 9921.0030           | 1          |
| 64A             | Ratchet Wheel (Includes 25C), per P64A-00120.....  | 9922.0015           | 1          |
| 64B             | Dust Cap for Inner Spring Side.....  | 9922.0036           | 1          |
| 64C             | Dust Cap for Outer Spring Side.....  | 9922.0037           | 1          |
| 64D             | Spring Arbor, per P64A-00110 (For "B" or "J" Springs).....   | 9922.0002           | 1          |
| 64E             | Right Hand Ratchet Locking Assembly Complete (Refer to ISO-207 for Individual Parts) .....                             | 9922.0312           | 1          |
| 64E             | Left Hand Ratchet Locking Assembly Complete (For Reverse Springs ONLY)<br>(Refer to ISO-207 for Individual Parts)..... | 9922.0311           | 1          |
| 69              | N206 Complete Roller Assembly for Model N818 (Refer to ISO-208 for Individual Parts).....                              | 9939.0113           | 1          |
| 69              | N204 Complete Roller Assembly for Model N816 (Not Shown)<br>(Refer to ISO-208 for Individual Parts).....               | 9939.0111           | 1          |
| 70              | N Series Single Roller Arm, per P70A-00250 (Specify Model).....  | 9941.0030           | 2          |
| 91              | 6" Long Anodized Threaded Spacer Pipe for Model N818.....  | 9904.0312           | 6          |
| 91              | 4" Long Anodized Threaded Spacer Pipe for Model N816 (Not Shown).....  | 9904.0308           | 6          |